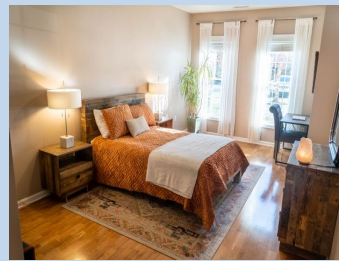


NEWER AFFORDABLE CONDO IN NATICK

\$225,930



9 Morgan Drive 102 | South Natick Hills | Natick | MA | 01760

Affordable and deed restricted beautiful condo @ the South Hill in Natick development. Enjoy the open floor plan, kitchen opening to dining room and great room with access to a balcony and great views. King size MBR suite with a large bath and walk in closet. Additional bedroom and bath. Hardwood floor throughout. Central air, newer water heater, laundry and storage room. Elevator in the building. EZ access to highway and shopping. **To qualify:** Max annual gross income: family of: 1 person—\$78,300; 2—\$89,500; 3—\$100,700; 4—\$111,850; Max liquid assets \$75,000, pre approved for a fixed rate mortgage. VA and FHA will not accept the deed rider. Application required.

- 1295 SF of living
- Condo fees: \$259
- Yearly Taxes \$2,393



Avi Glaser
Omega Ventures Inc.

Tel: 617-970-2403
E-mail: aviglaser@comcast.net
Web: www.myfirsthome.info