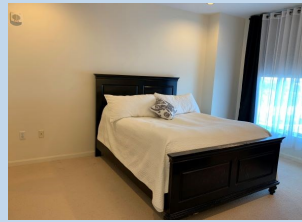
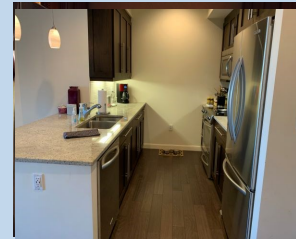


AFFORDABLE CONDO 2BR 2 BATH IN NATICK

\$170,764



40 Nuvelle Way # 946 | Parc Nouvelle Natick, MA 01760

First come first served! Application and pre approval is a must to be reviewed! Please read info on the web site. Beautiful affordable and deed restricted apartment at the Natick Mall. 2 BR 2 bath. Granite counter tops, stainless steel appliances, hardwood floor in living and dining room and tiled bathrooms. Central air, 2 car garage parking and one private large storage space. Concierge services, modern gym and club included. To qualify: Max annual gross income: family of: 1 person—\$70,750; 2-\$80,850; 3- \$90,950; 4-\$101,050. Max liquid assets \$75,000, pre approved for a fixed mortgage. Application required. Larger down payment might be requested. FHA & VA will not accept the deed rider

- 1155 SF of living
- Condo fees: \$408
- Taxes \$1987 (2021)
- 2 garage parking



Avi Glaser
Omega Ventures Inc.

Tel: 617-970-2403
E-mail: aviglaser@comcast.net
Web: www.myfirsthome.info