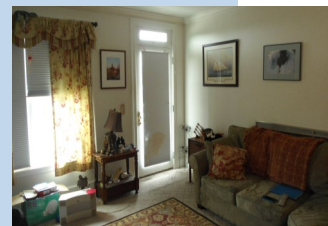


AFFORDABLE CONDO IN MARBLEHEAD

\$182,000



36 Intrepid Circle # 205 | Marblehead | MA | 01945

Spacious condo at the Marblehead Highlands. Enjoy the open floor plan kitchen opening to dining room, living room and a nice balcony. King size MBR suite with a large bath and walk in closet. Additional bedroom and bath add to the comfortable living. Central air and laundry hookups in the unit. One parking space and storage room. EZ access to the beach. To qualify: first time home buyer; Max annual gross income: family house hold of 1—\$51,150; 2-\$58,400; 3- \$65,750; 4-\$73,050. Max liquid assets \$75,000, pre approved for a fixed mortgage. Application required. FHA and VA loans will not accept the deed restrictions

- 1284 SF of living
- Condo fees: \$265
- Yearly Taxes \$1929



Avi Glaser
Omega Ventures Inc.

Tel: 617-970-2403
E-mail: aviglaser@comcast.net
Web: www.myfirsthome.info